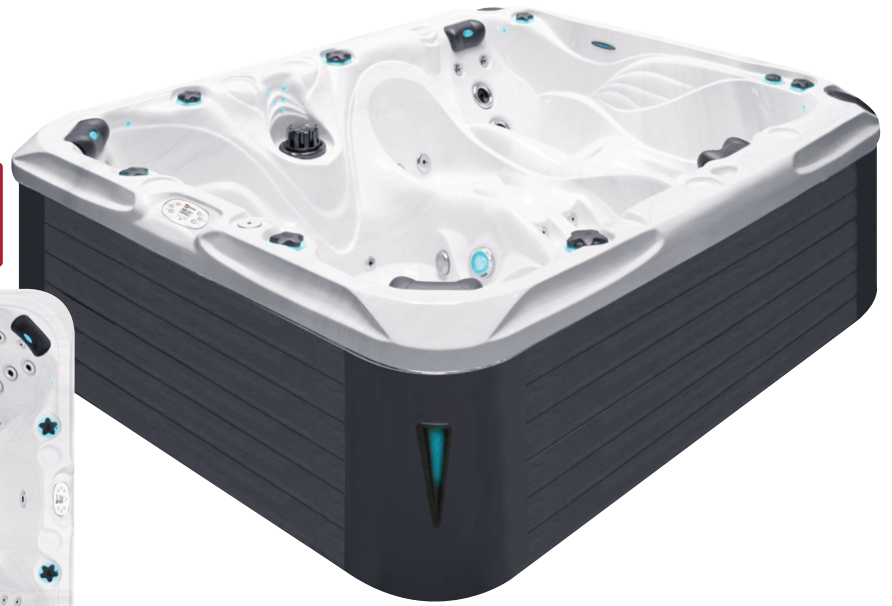
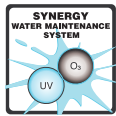




**passion**  
spas | love your senses

# DESIRE

## PASSION SPAS SIGNATURE COLLECTION



### SPECIFICATIONS/GENERAL

Dimensions LxWxH.....	274x228x91 cm
Number of Seats.....	4
Number of Loungers.....	2
Capacity in Liter.....	1660
Dry Weight in kg.....	490
Full Weight in kg.....	2150
Shell Material.....	Aristech® Acrylic with Vinylester and Polyester
Synthetic Maintenance Free Cabinet.....	Standard
Removable Side Panels.....	4
Durable Support System.....	Synthetic
Everlast™ Full Floor Support Material.....	Polyester
High Density Urethane Insulation.....	Standard
Cup Holders.....	?

### WATER SYSTEM

Total jets.....	68
Water Jets, Stainless Steel.....	60
Air Injector Jets.....	8
Air Control Valve.....	3
Filters / Surface.....	(1) 50 Square Feet
Top Access Skim Filter.....	High-Volume Vortex Skimmer
Floor Drain.....	1
External Drain.....	1
Hi Flow Suctions.....	4
Water Diverter Valve.....	2
5" Massage Jets, Directional, Rotational and Pulsational.....	9
3" Directional Jets.....	21
2" Directional Jets.....	29
Ozone Jets.....	1

### SPECIAL FEATURES

Soft Air Massage System.....	Standard
Molded Headrest Soft Pillows with LED Light.....	4
StarBrite Interior LED Light System.....	Standard
Cascade Creek Water Fall.....	1
Exterior Corner LED Lighting.....	2
Aromatherapy System.....	Standard
Ozone Sanitation System.....	Standard
Synergy Water Maintenance System.....	Standard
Ultra Efficient Dual-Wrap Cabinet Insulation.....	Standard
5/4 Ultra Efficient Walk-On Cover.....	Standard
Wifi Ready.....	Standard

### PUMP INFORMATION

Massage Pump 1: LX LP300.....	2,2 kW
Massage Pump 2: LX LP300.....	2,2 kW
Filtration Pump: LX WTC50M.....	250W
Air Pump: LX AP300.....	300W

### ELECTRICAL SYSTEM

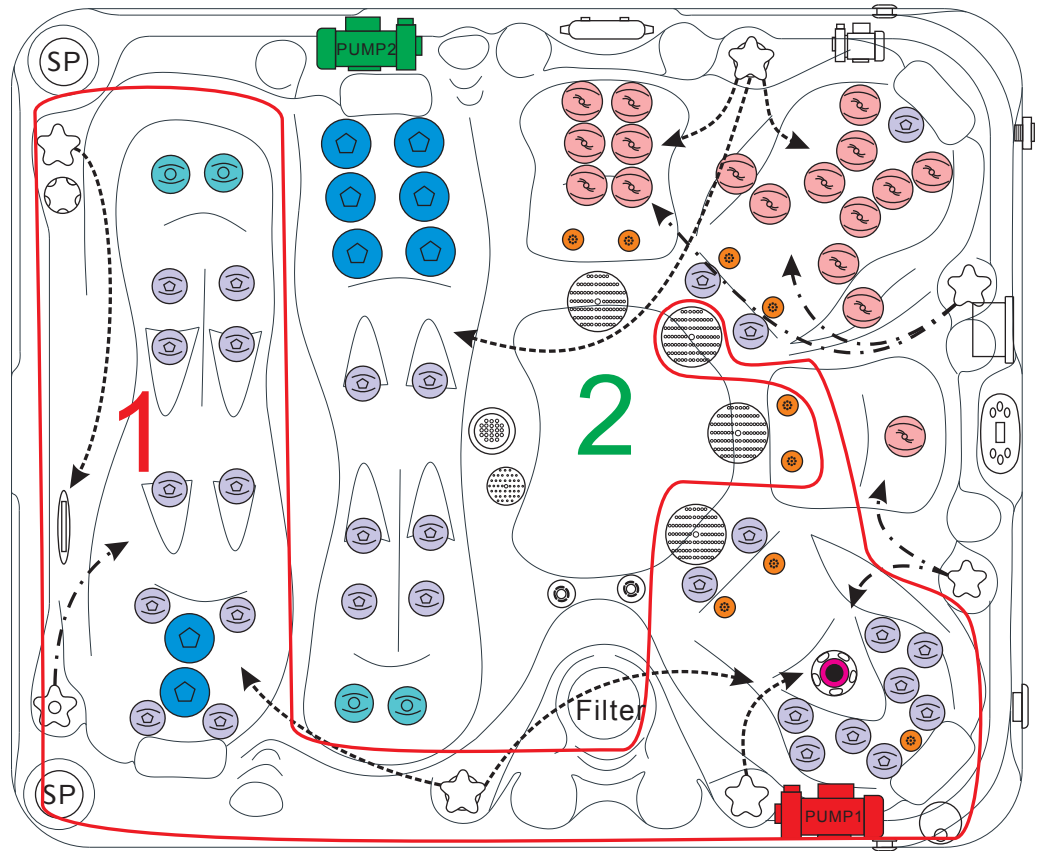
Voltage.....	230/380 V
Amperage.....	230V-20A/380V-16A
Full Flow Electric Heater.....	3 kW
Control System.....	Balboa BP600
Light (18 x Multi Color LED).....	Standard
Electronic Topside Control.....	Balboa TP600



# DESIRE

## PASSION SPAS SIGNATURE COLLECTION

**POWER SUPPLY**  
 1x 20A/230V or  
 1x 16A/380V



C.I.F. B76649805

Calle Santa Amelia, 18 · 38180 San Cristóbal de La Laguna · Tel: +34 922 611 500 · www.procalorhp.com

	Clusterjet 150293	29pcs		Water Diverter	150493		Speaker	150321
	Clusterjet 151322	4pcs		Air Control	150520		Controller & Heater JZ6013x1	152220
	Mini Jet 150126	17pcs		Optional Air Pump	150827		Drainage	150511
	Power Jet 150155	8pcs		Water Diverter	152029		WTC50 Circ. Pump	150817
	Swim Jet 150202	1pc		Aromatherapy	150560		LP300 Mass. Pump	150818
	Blowerjet 150561	9pcs		UV lamp	150777		LP300 Mass. Pump	150818
	Spa Light 150781	1pc		Pillow	150403		TP600 Display	151061
	Suction 150516	1pc		Filter lid Black	159111			
	Suction 150517	4pcs		Filter 4ch-949	151131			